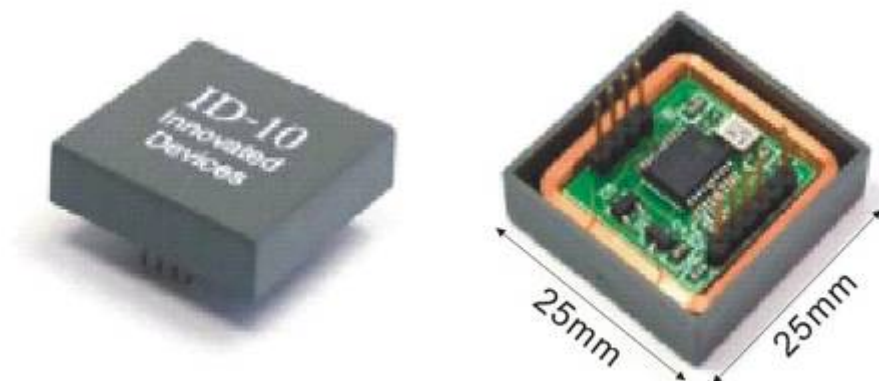


125Khz RFID Reader Module ID10



Model Number	ID-10 reader module
Frequency	125kHz
Reading distance	80mm
Card format	EM4100 or compatible chip
Dimension	25mm(L)*25mm(W)*6.5mm(H)
Interface	Wiegand 26 , RS232
Output	RS232 and WG26
Power supply	5V DC 35mA
Range of power supply	+4.6V to +5.4V
Encoding	Manchester 64-bit, modulus 64
Certificate	RoHS