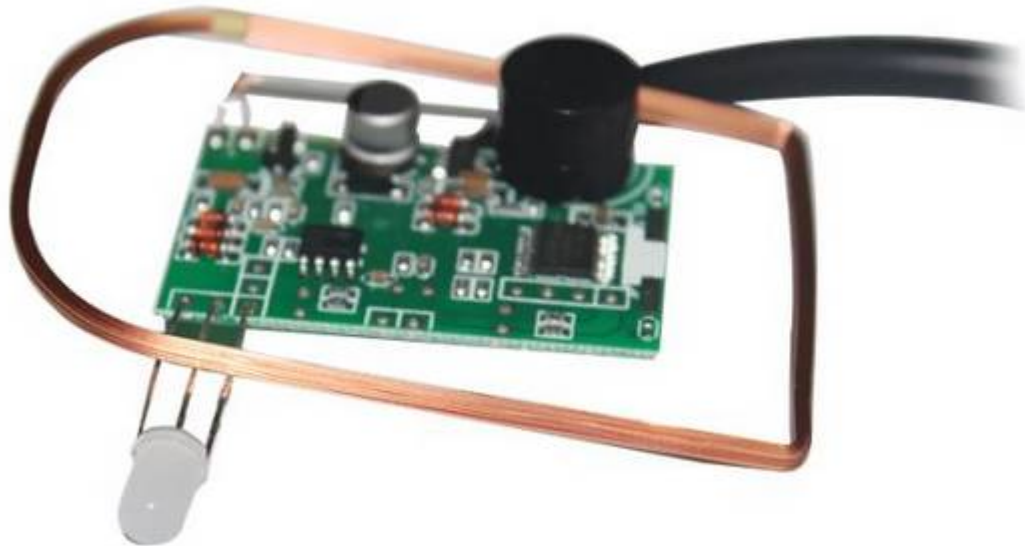


**Product Name : RFID Reader Module 125KHz**

**Product Model : ID-ML033**



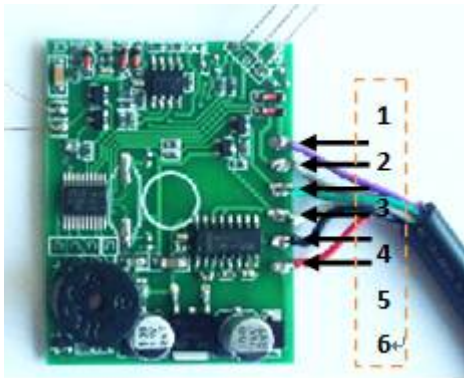
## Product description

ID-ML033 contactless ID card module, adopt advanced frequency accept circuitry and insert micro-controller design, combine high-effective decoding algorithm, accomplish data accept to TK4100, EM4200 compatible format ID card.

## Specification:

Support	EM4200, TK4100 etc
working frequency	125 KHz
Working pressure:	+12V, working current: 60mA
Interface	Wiegand26/34
Read range:	50-110mm (different card, different read range)
size	40X28X10mm
Response speed	< 0.1second
Working temperature	-20 °C -70 °C

## Pin Definition



NO.	Weigand26/34	color
1	12V	Red
2	GND	black
3	Wg26/34 choose	Purple: The default is WG26. this line to ground, the output is WG34
4	Beeper	grey
5	D1	white
6	D0	green